



VITEX THERM

Thermal Insulation System

PRODUCT GUIDE



Shield

Effective and long lasting building protection

Energy Saving

Significant cost reduction for heating and cooling

Aesthetics

High quality final result by selecting among thousands of color shades

Easy Application

Quick and integrated service of project needs with one crew



1. External Thermal Insulation Composite System (ETICS)	04
2. Certifications	06
3. VitexTherm Application Steps	08
4. Anti-Crack Protection System	10
5. Materials	
Substrate preparation	12
Bonding of insulating materials	13
Insulating materials	14
Mechanical fixing of insulating panels	15
Anti-crack layer	16
Coatings / Plasters	17
Special pieces / Accessories	18
Tools	20
Suspension parts for light and heavy weights	23
6. Indicative VitexTherm Solutions	24
7. VitexTherm Projects	28
8. Contact details	32

EXTERNAL THERMAL INSULATION COMPOSITE SYSTEM

FOR OLD AND NEW BUILDINGS

Vitex has created **VitexTherm**, a certified External Thermal Insulation Composite System (ETICS) which can be used on both old and new buildings. **VitexTherm** is a modern system for external thermal insulation and is the best choice for a quality result and construction durability. Designed to meet the most modern standards and tailored to the needs of the final consumer, it provides:



Great energy savings of up to 60%. Elimination of thermal bridges. **Quick return on investment in 3-6 years.**



Reduction in maintenance costs.



Full **protection and regeneration** of surfaces.



A wide range of grain sizes in the top coat, which do not crack.



Prevention of vapor condensation in the interior.



Thousands of shades!

The primer and top coat can be colored through the **Vitex Coloring System** in thousands of shades.



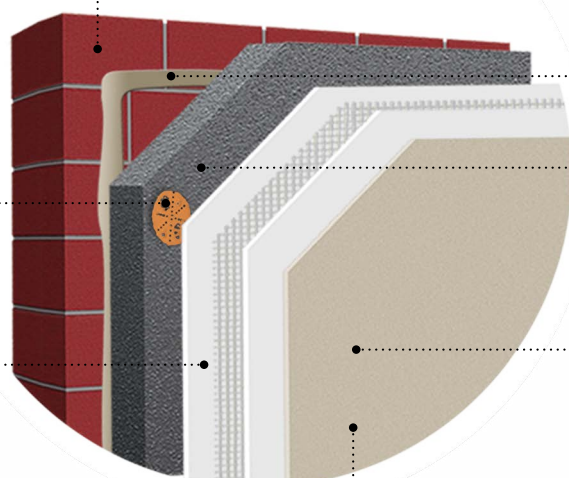
Mechanical fastening using plastic or metallic anchors

Special properly sized anchors for insulation panels fastening

Glass fiber mesh encasing mortar

White fiber reinforced **GNK 20W** or organic **GNK Elastic** mortar is used for encasing 160 gr/m² **VitexTherm** mesh

Substrate - Masonry



Adhesive for insulating panels
fiber reinforced mortar **GNK 10G** or **GNK Foam** adhesive

Insulating material
Expanded polystyrene insulating panels or mineral wool

Primer
Colored application **Granikot Primer**

Granikot Acrylic or Granikot Silicone or Granikot Fire Resistant Top Coat Plaster

Colored top coats of acrylic or silicone based highly resistant to weather changes and to mechanical stresses





VITEXTHERM

WITH **JUST ONE** CREW

...and the **VitexTherm System**
you meet all the project's needs:

- + Thermal Insulation**
- + Exterior Plastering**
- + Color**



See the step-by-step
application video
at www.vitextherm.gr
or our YouTube channel,
by scanning the QR code.



CERTIFICATIONS

1. Training and continuous support

VitexTherm technical seminars train application crews on **VitexTherm** products and the techniques and stages required from the beginning to the end of the project. The training is on-going with seminars on application, informational workshops throughout Greece, and the awarding of the **'Certificate of Attendance at VitexTherm Seminars'**.

✓ Sign up via our website www.vitextherm.gr



2. Partner Certification

Crews using **VitexTherm** receive a **'Certified VitexTherm Crew'** certificate after:

- Attending **VitexTherm seminars**.
- The proper installation of material in a project they have undertaken, according to the specifications of the company, following a check by our technical department.



3. 10-year guarantee

The **VitexTherm** exterior insulation system comes with a **10-year guarantee** for the materials and installation of the system if it is carried out by a certified partner and the application is checked by the company's technical department*.



* For more information concerning the guarantee, please contact our company.

4. System Certifications

As building materials, the **VitexTherm** External Thermal Insulation Composite Systems have the **CE** mark as it has received **European Technical Approval ETA 15/0148** for VitexTherm (insulating material EPS) and **ETA 19/0180** for VitexTherm (insulating material mineral wool) certification for the production process (**FPC**) **Certificate No 2884-CPR-00064**- assessed to be in compliance with its applicable requirements **EAD 040083-00-0404**. In conclusion, the application of **VitexTherm** exterior thermal insulation systems ensure that the materials have been tried and tested and that the final result will remain unchanged through time for **at least 25 years**. **Granikot Fire Resistant** topcoat is certified for non-combustibility - **Fire reaction Class A2-s1, d0**.



STEP - BY - STEP GUIDE TO USING VITEXTHERM

1

Preparing the substrate.



2

High water - proofing zone and placement of the metal lath.



5

Mechanical fastening with:

- plastic **PL**
- metal **MT**
- screws **Thread**
- plastics **WK-LTX**



6

Placement of polystyrene caps.



9

Placement of diagonal mesh.



10

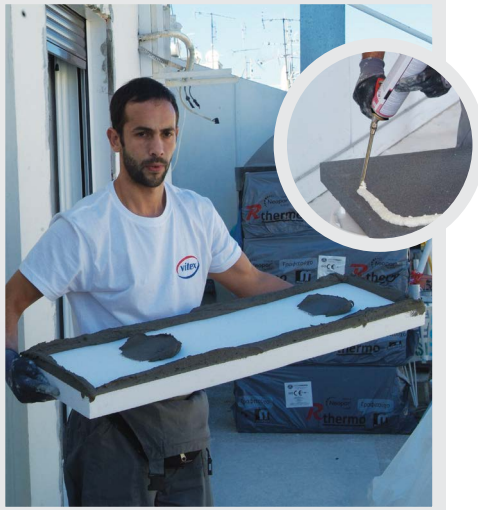
Anti-cracking layer with GNK 20W fiberglass-reinforced mortar or GNK Elastic with organic materials and VitexTherm glass fiber mesh 160 gr/m².



STEP - BY - STEP GUIDE TO USING VITEXTHERM

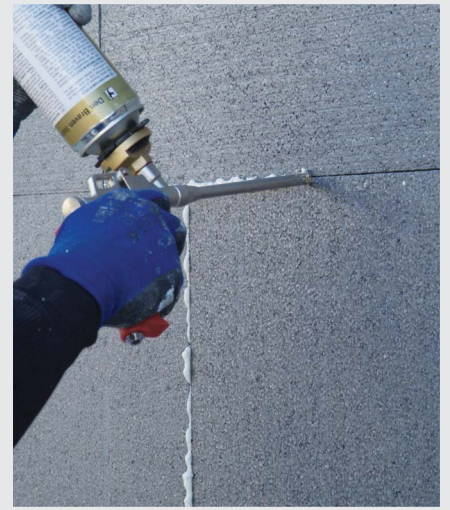
3

Bonding **thermal insulation panels** with **GNK 10G** mortar or **GNK polyurethane foam**.



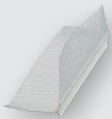
4

Filling gaps with low expansion **Maxi Gun Foam**.



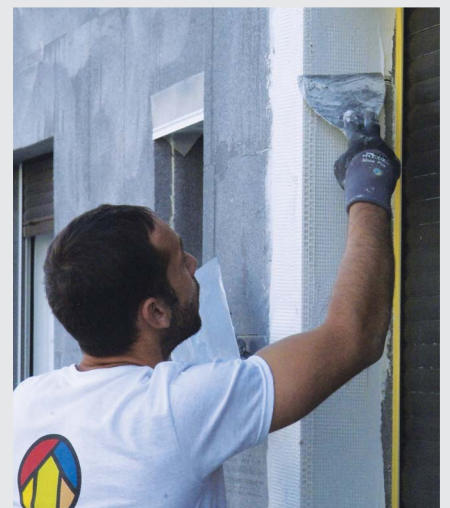
7

Placement of **dripnose bead** on lintels over doors and windows.



8

Placement of **corner beads** on exterior corners.



11

Application of **Granikot Primer**. Can be colored in thousands of shades through **Vitex Coloring System**.



12

Application of **Granikot** plaster. Can be colored in thousands of shades through **Vitex Coloring System**.



ANTI-CRACK PROTECTION SYSTEM

FOR OLD BUILDINGS WHICH REQUIRE REPAIRS

Hairline cracks in wall plaster create **problems on the facade of the building** and **reduce its ability to protect** against humidity and extreme weather conditions. This phenomenon is caused either by extreme expansion/contraction or because of a lack of continuity between the various construction layers (e.g. the bonding of the masonry with the concrete). The **Anti-Crack Protection System** is the perfect solution for existing houses, hotels and industrial sites. It permanently protects and improves the appearance of external surfaces, with the best value for money ratio.

The problem:

- ✓ **Hairline cracks** in plaster
- ✓ **Humidity penetrates the facade**
- ✓ **Constant repairs** of surfaces with no improvement

The final result provides:



Complete **reinforcement** and **regeneration** of surfaces.



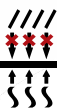
Perfect appearance



Permanent solution with no need for maintenance and repainting.



Wide range of Grain Size.



Great transpiration and flexibility.

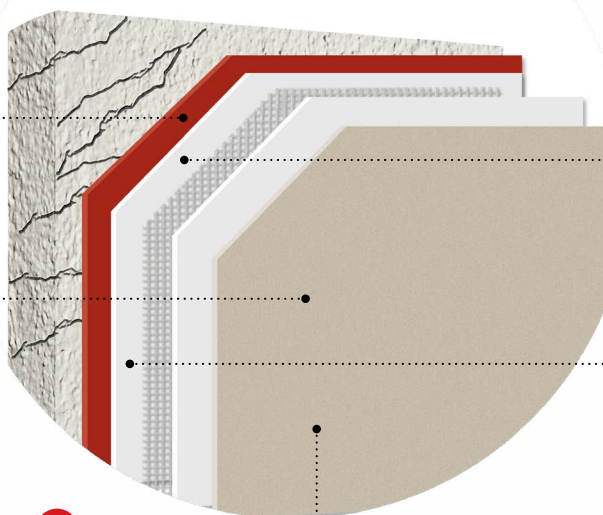


Thousands of shades!

The primer and mortar can be colored in thousands of shades through **Vitex Coloring System**.

1
Superbond quartz primer
for strong adhesion

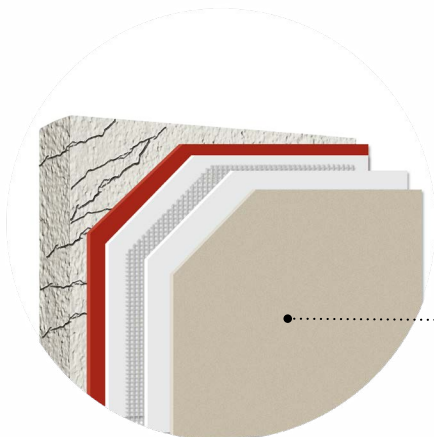
4
Colored Granikot Primer



2
VitexTherm
glass fiber mesh

3a or 3b
White fiber reinforced **GNK 20W** or **GNK Elastic** with organic material mortar is used for encasing 160gr/m² **VitexTherm** mesh

5
Granikot Acrylic / Fire Resistant top coat plaster.
Colored top coat plasters of acrylic or silicone based highly resistant to weather changes and to mechanical stresses



1 SUPERBOND PRIMER

Quartz Primer for strong adhesion on smooth and low absorption surfaces.

Spreading rate: 8 - 12 m²/L



2 VITEXTHERM GLASS FIBER MESH

Alkali resistant glass fiber mesh 160 gr/m² to reinforce fiber reinforced mortar.

Consumption: 1,10 m²/m²



3a GNK 20W

Fiber reinforced cement based mortar. Combined with **glass fiber mesh**, used for **anti crack layer**.

Consumption: 4,5 Kg/m²



3b GNK ELASTIC

Reinforced organic elastomeric material. Used for anti-cracking layer in combination with **fiberglass mesh**.

Consumption: 4,5 Kg/m²



Thousands of shades!

4 GRANIKOT PRIMER

White textured primer that can be colored through **Vitex Coloring System**.

Consumption: 100 mL/m²



Thousands of shades!

5 GRANIKOT ACRYLIC, GRANIKOT FIRE RESISTANT and GRANIKOT SILICONE

High quality acrylic or silicone-based plaster colored through **Vitex Coloring System**.

Consumption: 1,8 - 3,2 kg/m² (subject to granulation)

SUBSTRATE PREPARATION



SUPERBOND PRIMER

Strong adhesion quartz primer for smooth and low absorption surfaces.

Packaging	Spreading rate
750 mL	8 - 12 m ² / L subject to coat thickness
3 L	
10 L	



VITEXTHERM VT-10

Cement-based single component ready-to-use industrial mortar. Applied on the high water-proofing zone. Used in combination with VT-20 acrylic resin for high sealing properties and flexibility.

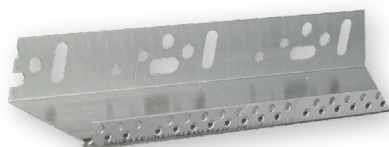
Packaging	Consumption
25 kg	2,5 - 3,0 kg / m ² for 2 mm coat thickness



VITEXTHERM VT-20

Emulsion admixture for VT-10 sealing mortar at 1:5 ratio. Provides improved workability and simultaneously increases mechanical and chemical properties.

Packaging	Consumption
5 kg	5 kg / 25 kg mortar VITEXTHERM VT-10



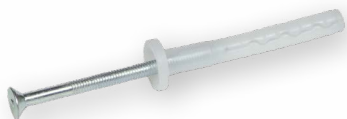
METAL LATH

Aluminum metal lath for VitexTherm external thermal insulation system levelling.

Width	Packaging	Sale Unit
5 cm	10 pcs X 2,5 m	piece (2,5 m)
6 cm		
7 cm		
8 cm		

SUBSTRATE PREPARATION

STARTUP GUIDE FIXING PLUG



Impact plug (8 X 60mm) for metal lath. Used on brick, concrete and other solid or perforated building materials.

Packaging

100 pcs

STARTUP GUIDE SPACERS



Plastic profiles for filling gaps between the substrate and the metal lath for masonry levelling. Can be located by simple clipping on the plug; individual parts may be combined to generate increased thickness.

Thickness

3 mm

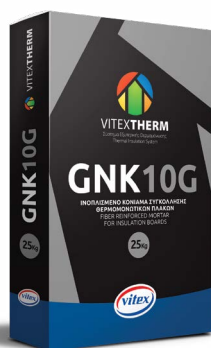
5 mm

10 mm

Packaging

100 pcs

BONDING OF INSULATING MATERIALS



GNK 10G

Fiber reinforced cement based mortar for bonding insulating polystyrene panels on facades of buildings. **CE in accordance with EN 998-1.**

Packaging

25 kg

Consumption

3 - 5 kg / m²



GNK FOAM

Polyurethane adhesive foam for bonding polystyrene insulating panels on facades of buildings.

Packaging

750 mL

Spreading rate

6 - 8 m²

VITEXTHERM EPS 80 WHITE

Expanded polystyrene panel, **CE in accordance with EN 13163**, suitable for external thermal insulation.



Panel dimensions	Thermal conductivity λ (W/mk)	m ² /package	Panel thickness
100 X 60 cm	0,036	15	2 cm
		9,6	3 cm
		7,2	4 cm
		6	5 cm
		4,8	6 cm
		4,2	7 cm
		3,6	8 cm
		3	10 cm

VITEXTHERM EPS 200 WHITE

Expanded polystyrene panel, **CE in accordance with EN 13163**, suitable for external thermal insulation. Mainly applied as high strength zone.



Panel dimensions	Thermal conductivity λ (W/mk)	m ² /package	Panel thickness
100 X 60 cm	0,033	15	2 cm
		9,6	3 cm
		6	5 cm
		4,8	6 cm
		4,2	7 cm
		3,6	8 cm
		3	10 cm

VITEXTHERM EPS 80 GRAPHITE PLUS

Graphite-based expanded polystyrene panel, **CE in accordance with EN 13163**, suitable for external thermal insulation.



Panel dimensions	Thermal conductivity λ (W/mk)	m ² /package	Panel thickness
100 X 60 cm	0,030	15	2 cm
		9,6	3 cm
		7,2	4 cm
		6	5 cm
		4,8	6 cm
		4,2	7 cm
		3,6	8 cm
		3	10 cm

SUBSTRATE PREPARATION

VITEXTHERM EPS 100 GRAPHITE PLUS

Graphite-based expanded polystyrene panel, **CE in accordance with EN 13163**, suitable for external thermal insulation.



Panel dimensions	Thermal conductivity λ (W/mk)	m ² /package	Panel thickness
100 X 60 cm	0,030	15	2 cm
		9,6	3 cm
		7,2	4 cm
		6	5 cm
		4,8	6 cm
		4,2	7 cm
		3,6	8 cm
		3	10 cm



VITEXTHERM MINERAL WOOL

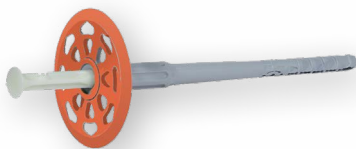
Exterior thermal insulation mineral wool. The material is non-combustible and offers excellent thermal and acoustic insulation. Fire reaction **Class A1** as per **EN 13501-1**.

Panel dimensions	Thermal conductivity λ (W/mk)	m ² /package	Panel thickness
100 X 60 cm	0,036	4,8	3 cm
		4,2	4 cm
		3,6	5 cm
		3	6 cm
		2,4	7 cm
		1,8	8 cm
		1,8	10 cm

MECHANICAL FIXING OF INSULATING PANELS

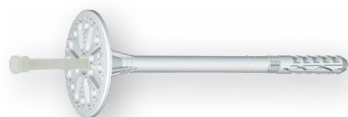
VITEXTHERM PL

Impact driven plastic anchor for brick, concrete and other solid and perforated building materials with reinforced plastic pin for surface mounting of the insulating material. **EAD 330196-01-0604** certified. Screw diameter: 8mm, washer diameter: 60mm, Minimum anchoring depth: 35mm.



Product name	Packaging
VITEXTHERM PL 110	100 pcs
VITEXTHERM PL 130	
VITEXTHERM PL 150	
VITEXTHERM PL 170	
VITEXTHERM PL 190	

MECHANICAL FIXING OF INSULATING PANELS



WK – LTX

Impact driven plug for brick, concrete and other solid & perforated building materials with reinforced plastic pin for surface mounting of the thermal insulation material. **Certified as per ETAG 014.** Screw diameter: 8mm. Washer diameter: 60mm. Minimum anchor depth: 35mm.

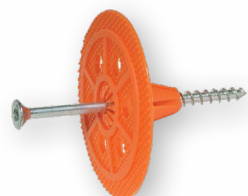
Product name	Packaging
WK - LTX 095	200 pcs
WK - LTX 115	
WK - LTX 135	
WK - LTX 155	
WK - LTX 175	



VITEX THERM MT

Impact driven metallic anchor for brick, concrete and other solid and perforated building materials with reinforced plastic pin for surface mounting of the insulating material. **ETAG 014 certified.** Screw diameter: 8mm, washer diameter: 60mm, Minimum anchoring depth: 25mm.

Product name	Packaging
VITEX THERM MT 095	200 pcs
VITEX THERM MT 115	
VITEX THERM MT 135	



VITEX THERM THREAD

Threaded anchor with galvanized screw for surface mounting of the insulating material. **ETAG 014 certified.** Applications: Wood, OSB, fiber board or cement board. Washer diameter: 60mm, Minimum anchoring depth: 25mm.

Product name	Packaging
VITEX THERM THREAD 080	100 pcs
VITEX THERM THREAD 100	

ANTI-CRACK LAYER



GNK 20W

Fiber reinforced white cement-based mortar. **CE in accordance with EN 998-1.** Combined with glass fiber mesh, used for covering insulation panels of expanded polystyrene.

Packaging	Consumption
25 Kg	3 - 4,5 Kg / m ²

VITEX THERM GLASS FIBER MESH

Alkali resistant glass fiber mesh 160 gr/m² to reinforce the fiber reinforced mortar. **EAD 040083-00-0404** certified.

Roll	Consumption	Roll dimensions (m)
50 m ²	1,1 m ² /m ²	1 m X 50 m

ANTI-CRACKING LAYER



GNK ELASTIC

Ready-to-use fiber-reinforced white paste resin coating/glue. In combination with VITEXTHERM fiberglass mesh, it is used to cover thermal insulation panels with expanded or extruded polystyrene, also for use with inorganic fiber (mineral wool) panels. Offers high elasticity. Suitable for bonding polystyrene thermal insulation panels on outer facades of buildings.

CE certified as per EN 15824.

Packaging

15 kg

Consumption

2 - 4 Kg / m²

COATINGS/PLASTERS



Thousands of shades!

GRANIKOT PRIMER

White acrylic textured primer, ideal for interior and exterior surfaces from plaster, cement and surfaces painted with water-based paints (plastic, acrylic etc). It improves the appearance, coverage, adhesion and resistance of **Granikot Acrylic** and **Silicone** plaster on smooth and uneven surfaces. Can be colored through **Vitex Coloring System**.

Packaging

3 L

10 L

Consumption

100 - 120 mL / m²



Thousands of shades!

GRANIKOT ACRYLIC

High quality acrylic plaster, ideal for building facades, weather resistant, with excellent protective properties against UV radiation. Highly solid with excellent adhesion and elasticity. Can be colored through

Vitex Coloring System. CE in accordance with EN 15824.

Product name	Packaging	Granulation (mm)	Consumption (kg/m ²)
Granikot Acrylic Flat	5 kg	1,0	1,7 - 2,2
		1,5	2,0 - 2,5
Granikot Acrylic Flat	25 kg	1,0	1,7 - 2,2
		1,5	2,0 - 2,5
Granikot Acrylic Grafiato	25 kg	1,5	1,8 - 2,2
		2,0	2,3 - 2,7
		2,5	2,8 - 3,2



Thousands of shades!

GRANIKOT SILICONE

High quality silicon-based plaster with water repellent properties, resistant to weather conditions, water repellent with high transpiration to water vapour. Therefore, it protects surfaces against mould and fungi. It is highly resistant to UV radiation and temperature. Ideal for areas with high humidity and environmental pollution. Can be colored through **Vitex Coloring System**. CE in accordance with EN 15824.

Product name	Packaging	Granulation (mm)	Consumption (kg/m ²)
Granikot Silicone Flat	5 kg	1,0	1,7 - 2,2
		1,5	2,0 - 2,5
Granikot Silicone Flat	25 kg	1,0	1,7 - 2,2
		1,5	2,0 - 2,5
Granikot Silicone Grafiato	25 kg	1,5	1,8 - 2,2
		2,0	2,3 - 2,7
		2,5	2,8 - 3,2



Thousands of shades!

GRANIKOT FIRE RESISTANT

High quality acrylic non-flammable plaster, with certified fire reaction Class **A2-S1, D0**. Ideal for building facades, resistant to extreme conditions with excellent protective properties against UV radiation. **CE certified as per EN 15824**. It is highly compressed, has excellent adhesion and elasticity. Can be colored through **Vitex Coloring System**.

Product name	Packaging	Granulation (mm)	Consumption (kg/m ²)
Granikot Fire Resistant	25 kg	1,0	1,7 - 2,2
		1,5	2,0 - 2,5

SPECIAL PIECES / ACCESSORIES

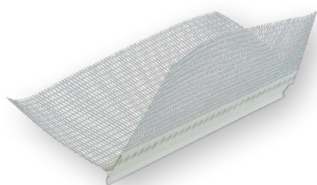


PVC CORNER BEAD WITH MESH

PVC corner bead with adhesive alkali resistant glass fiber mesh to protect edges in the **VitexTherm** External Thermal Insulation Composite System.

Dimensions	Packaging	Sales unit
10 cm X 15 cm X 2,5 m	Package (50 pcs X 2,5 m)	piece (2,5m)

SPECIAL PIECES / ACCESSORIES



DRIPNOSE BEAD PVC

PVC profile with adhesive alkali resistant glass fiber mesh for formation of dripnose when transiting from vertical to horizontal surfaces, in the **VitexTherm** External Thermal Insulation Composite System.

Dimensions	Packaging	Sales unit
10 cm X 10 cm X 2,5 m	Package (20 pcs X 2,5 m)	piece (2,5m)

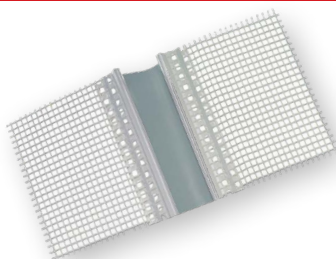


FLEXIBLE PVC CORNER BEAD

Variable angle PVC corner bead with adhesive alkali resistant glass fiber mesh to protect non vertical edges (90°) in the **VitexTherm** External Thermal Insulation Composite System

Packaging

Roll
(25 m)



EXPANSION JOINT PROFILE (E TYPE)

PVC profile with adhesive alkali resistant glass fiber mesh for formation of expansion joint on a level side (E type).

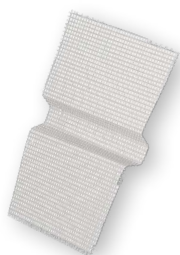
Packaging	Sales unit
Package (25 pcs X 2,5 m)	piece (2,5m)



INNER CORNER EXPANSION JOINT PROFILE (V TYPE)

PVC profile with adhesive alkali resistant glass fiber mesh for formation of expansion joint on inner corners (V type).

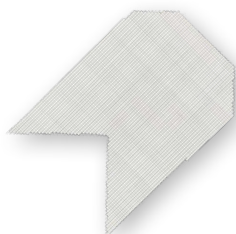
Packaging	Sales unit
Package (25 pcs X 2,5 m)	piece (2,5m)



MESH FOR TRAPEZOID ARCHITRAVE BEADS

Special glass fiber mesh to form trapezoid-shaped architrave beads.

Dimensions	Packaging	Sales unit
30/20/17 mm	2 m	piece (2 m)



DIAGONAL MESH TO REINFORCE STRUCTURAL OPENINGS

Trapezoid section alkali resistant mesh to reinforce corners of structural openings.

Dimensions	Sales unit
30 cm X 50 cm	box (50 pcs)

SPECIAL PIECES / ACCESSORIES / TOOLS



MAXI GUN FOAM – LOW EXPANSION

Low expansion polyurethane gun foam.
Used for filling gaps between polystyrene panels.

Packaging

825 mL



CAPS VITEXTHERM EPS WHITE Ø65

Round section caps from expanded polystyrene to cover fixing plugs.

Dimensions

Ø 65

Sales unit

100 pcs



CAPS VITEXTHERM EPS GRAPHITE Ø65

Round section caps from graphite-based expanded polystyrene to cover fixing plugs.

Dimensions

Ø 65

Sales unit

100 pcs

TOOLS



PLASTIC MILLING CUTTER

Plastic milling tool to create recesses on insulating panels for placing mechanical strength anchors.

Packaging

1 piece



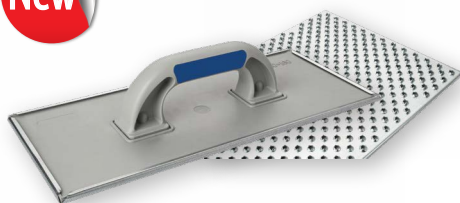
METALLIC MILLING CUTTER

Metallic milling tool to create recesses on insulating panels for placing mechanical strength anchors.

Packaging

1 piece

New



POLYSTYRENE SANDER

Metal sander suitable for thermal insulation panels.

Packaging

1 piece

New



PLASTIC TROWEL

Plastic trowel for forming the final texture on **Granikot Acrylic** and **Granikot Silicone**.

Packaging

1 piece

New



METAL TROWEL

INOX coating grinder trowel.

Packaging

1 piece



POLYURETHANE GUN FOAM

Gun for the application of **GNK - Foam** and **Maxi Gun Foam Low Expansion**.

Packaging

1 piece



HAND-HELD POLYSTYRENE CUTTING MACHINE C-140

A powerful hand-held cutting machine for special polystyrene cuts. Perfect for thicknesses up to 140mm.

Packaging

1 piece

New



POLYSTYRENE CUTTING MACHINE EUROKOMAX

Tool used for cutting polystyrene panels.

Length of cut: 1060mm

Output voltage 230Volt

Power: 111Watt, at low voltage 50/60 Hz

- ✓ High precision with the ability to make a number of different cuts
- ✓ Adjustable cutting depth

Packaging

1 piece



ARCHITRAVE BEADS MOUNTING TOOL

Tool for applying coatings in architrave beads, in the **VitexTherm** External Thermal Insulation Composite System.

Packaging

1 piece

SUSPENSION PARTS FOR LIGHT AND HEAVY WEIGHTS



SPIRAL ANCHOR FOR LIGHT WEIGHTS

Spiral anchor for suspension of light weights (up to 5kg) in the **VitexTherm** External Thermal Insulation Composite System.

Packaging

10 pcs



SOCKET MOUNTING ACCESSORY

Tubular polyamide accessory for socket mounting (socket inner diameter Ø 65 and outer diameter 105mm).

Packaging

1 piece



SOCKET MOUNTING MILLINE CUTTER

Plastic milling tool to create recesses on insulating panels for placing the electric recessed sockets.

Packaging

1 piece

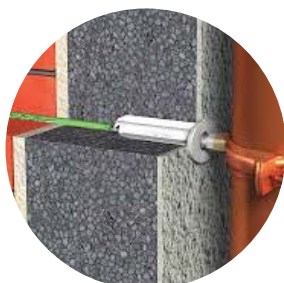
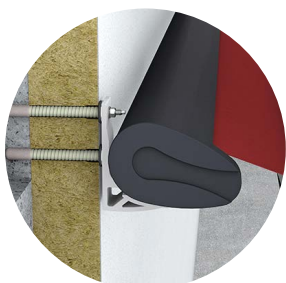


HEAVY WEIGHT CYLINDER

Polyethylene tube for suspension of heavy weights (to 40kg) in the **VitexTherm** External Thermal Insulation Composite System (Ø 90mm, length 540mm).

Packaging

1 piece



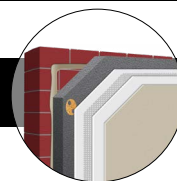
In consultation with our technical department special pieces are available for the ex post placement of loads e.g. gutters, signs, luminaires, awnings etc.





INDICATIVE VITEXTHERM SOLUTIONS *

EXTERNAL THERMAL INSULATION SYSTEM



1st CHOICE

- ✓ Economic solution
- ✓ Energy savings of up to 30%



MATERIAL	DESCRIPTION	CONSUMPTION/m ²
GNK 10G	Adhesive Mortar	4,5 kg/m ²
VITEXTHERM EPS 80 WHITE (5cm)	Expanded Polystyrene	1,0 m ² /m ²
WK-LTX 115	Plastic Anchor	5 pcs/m ²
GNK 20W	Reinforcement Material	4,5 kg/m ²
VITEXTHERM GLASS FIBER MESH	Glass fiber Mesh	1,10 m ² /m ²
GRANIKOT PRIMER	Primer	100 mL/m ²
GRANIKOT ACRYLIC FLAT W (1,0 mm)	Acrylic Plaster	2,0 kg/m ²

2nd CHOICE

- ✓ High elasticity
- ✓ Energy savings of up to 40%
- ✓ Impact resistance
- ✓ Reinforced mechanical fastening



MATERIAL	DESCRIPTION	CONSUMPTION/m ²
GNK 10G	Adhesive Mortar	4,5 kg/m ²
VITEXTHERM EPS 80 GRAPHITE (5cm)	Graphite - based Expanded Polystyrene	1,0 m ² /m ²
VITEXTHERM PL 110	Plastic Anchor	5 pcs/m ²
GNK ELASTIC	Reinforcement Material	4,5 kg/m ²
VITEXTHERM GLASS FIBER MESH	Glass fiber Mesh	1,10 m ² /m ²
GRANIKOT PRIMER	Primer	100 mL/m ²
GRANIKOT ACRYLIC FLAT W (1,0 mm)	Acrylic Plaster	2,0 kg/m ²

* Materials consumption is indicative and subject to project features.

3rd CHOICE

- ✓ Energy savings of up to 44%
- ✓ Thermal resistance coefficient $R > 1.8$



MATERIAL	DESCRIPTION	CONSUMPTION/m ²
GNK 10G	Adhesive Mortar	4,5 kg/m ²
VITEXTHERM EPS 80 WHITE (7cm)	Expanded Polystyrene	1,0 m ² /m ²
WK-LTX 135	Plastic Anchor	5 pcs/m ²
GNK 20W	Reinforcement Material	4,5 kg/m ²
VITEXTHERM GLASS FIBER MESH	Glass fiber Mesh	1,10 m ² /m ²
GRANIKOT PRIMER	Primer	100 mL/m ²
GRANIKOT ACRYLIC FLAT W (1,0 mm)	Acrylic Plaster	2,0 kg/m ²

4th CHOICE

- ✓ Polyurethane foam can be used as an adhesive for polystyrene panels
- ✓ Energy savings of up to 30%
- ✓ Fast application on flat surfaces
- ✓ Reinforced mechanical fastening



MATERIAL	DESCRIPTION	CONSUMPTION/m ²
GNK FOAM	Adhesive Foam	110 mL/m ²
VITEXTHERM EPS 80 WHITE (5cm)	Expanded Polystyrene	1,0 m ² /m ²
VITEXTHERM PL 110	Plastic Anchor	5 pcs/m ²
GNK 20W	Reinforcement Material	4,5 kg/m ²
VITEXTHERM GLASS FIBER MESH	Glass fiber Mesh	1,10 m ² /m ²
GRANIKOT PRIMER	Primer	100 mL/m ²
GRANIKOT ACRYLIC FLAT W (1,0 mm)	Acrylic Plaster	2,0 kg/m ²

* Materials consumption is indicative and subject to project features.



INDICATIVE VITEXTHERM SOLUTIONS *

5th CHOICE

- ✓ Non-combustible mineral wool with high fire resistance A1
- ✓ High level of sound insulation
- ✓ High breathability & waterproofing
- ✓ Energy savings of up to 30%
- ✓ Reinforced mechanical fastening



MATERIAL	DESCRIPTION	CONSUMPTION/m ²
GNK 10G	Adhesive Mortar	5 kg/m ²
VITEXTHERM MINERAL WOOL (5cm)	Mineral Wool	1,0 m ² /m ²
VITEXTHERM PL 110	Plastic Anchor	5 pcs/m ²
GNK 20W	Reinforcement Material	4,5 kg/m ²
VITEXTHERM GLASS FIBER MESH	Glass fiber Mesh	1,10 m ² /m ²
GRANIKOT PRIMER	Primer	100 mL/m ²
GRANIKOT SILICONE FLAT W (1,0mm)	Acrylic Plaster	2,0 kg/m ²

6th CHOICE

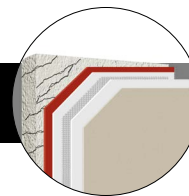
- ✓ Energy savings of up to 44%
- ✓ High fire protection level with non-combustible plaster certified Class A2-s1, d0
- ✓ Thermal resistance coefficient R> 1.8



MATERIAL	DESCRIPTION	CONSUMPTION/m ²
GNK 10G	Adhesive Mortar	4,5 kg/ m ²
VITEXTHERM EPS 80 WHITE (7cm)	Expanded Polystyrene	1,0 m ² / m ²
WK-LTX 135	Plastic Anchor	5 pcs/ m ²
GNK 20W	Reinforcement Material	4,5 kg/ m ²
VITEXTHERM GLASS FIBER MESH	Glass fiber Mesh	1,1 m ² / m ²
GRANIKOT PRIMER	Primer	100 ml/ m ²
GRANIKOT FIRE RESISTANT FLAT W (1,0mm)	Non Combustible Plaster	2 kg/ m ²

* Materials consumption is indicative and subject to project features.

ANTI-CRACK PROTECTION SYSTEM



1st CHOICE

- ✓ With inorganic GNK 20W
- ✓ Full shielding and restoration of surface facades
- ✓ Definitive solution



MATERIAL	DESCRIPTION	CONSUMPTION/m ²
GNK 20W	Reinforcement Material	4,5 kg/ m ²
VITEXTHERM GLASS FIBER MESH	Glass fiber Mesh	1,1 m ² / m ²
GRANIKOT PRIMER	Primer	100 ml/ m ²
GRANIKOT ACRYLIC FLAT W (1,0mm)	Acrylic Plaster	2 kg/ m ²

2nd CHOICE

- ✓ With organic mortar GNK Elastic
- ✓ Full shielding and restoration of surface facades
- ✓ Definitive solution
- ✓ High elasticity and impact resistance



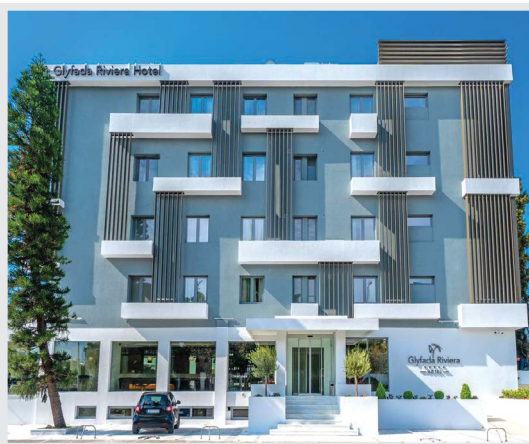
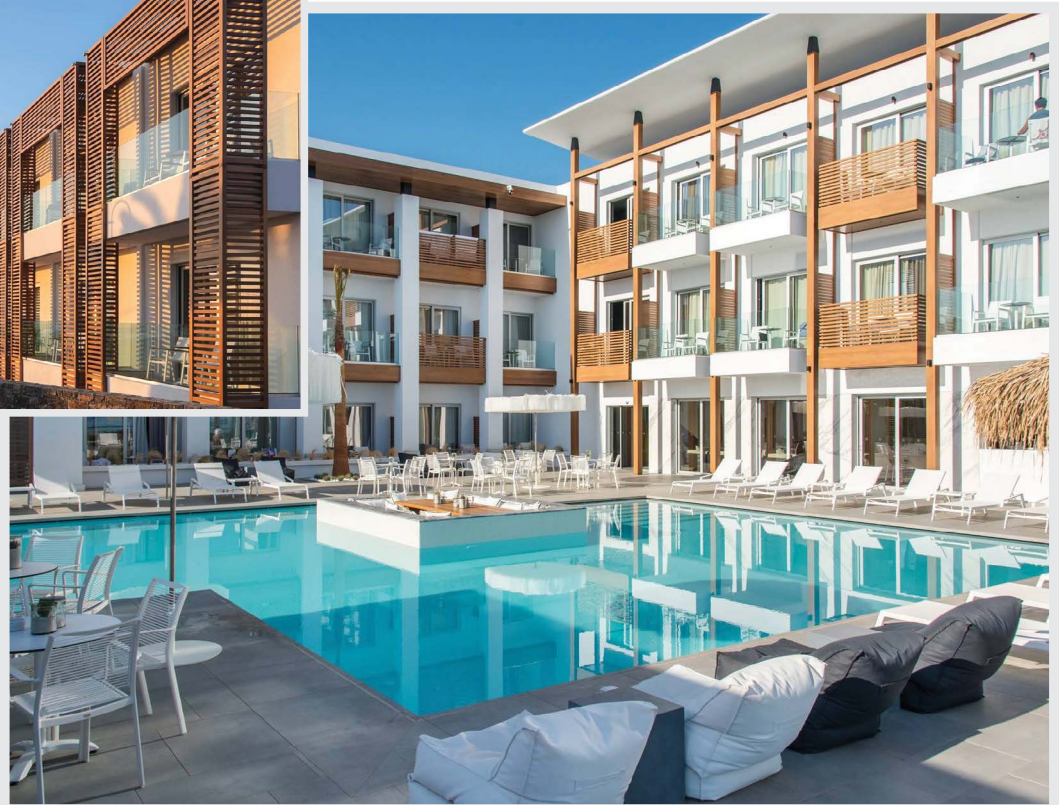
MATERIAL	DESCRIPTION	CONSUMPTION/m ²
GNK ELASTIC	Reinforcement Material	3,0 kg/ m ²
VITEXTHERM GLASS FIBER MESH	Glass fiber Mesh	1,1 m ² / m ²
GRANIKOT PRIMER	Primer	100 ml/ m ²
GRANIKOT ACRYLIC FLAT W (1,0mm)	Acrylic Plaster	2 kg/ m ²

* Materials consumption is indicative and subject to project features.

PROJECTS VITEXTHERM



External thermal
insulation at
Ammos Beach Resort
Hotel in Malia,
Heraklion, Crete
Surface area:
3.000 m²



External thermal
insulation at
Glyfada Riviera Hotel
in Glyfada, Athens.
Surface area:
2.000 m²



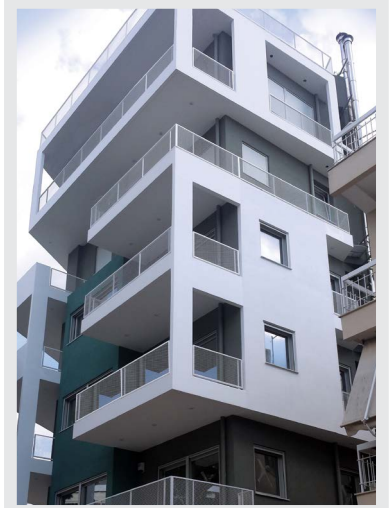
GRECOTEL
HOTELS & RESORTS



External insulation of a hotel extension, Peloponnese, Greece.

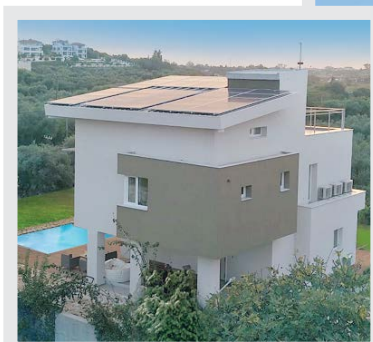
External insulation of private home, Greece.
Surface area: **800 m²**

Upgrade of energy efficiency of public building, Athens, Greece.
Surface area: **8.500 m²**



External insulation of a hotel, Crete island, Greece. Surface area: **2.000 m²**

PROJECTS VITEXTHERM



Applying topcoat at 'Enervillas', villa accommodation in Achaia. nZEB 'Nearly zero-energy building'. Certified Passive House Premium



External insulation of private home, Greece. Surface area: **650 m²**

Energy efficiency upgrade of a nursery school, Greece. Surface area: **700 m²**



External
thermal insulation
at a new hotel
in Kalamata.
Surface area:
2.500 m²



Upgrade of
energy efficiency
of primary school,
Greece.
Surface area:
2.500 m²



External thermal insulation at the
Metropole Urban Hotel in Heraklion, Crete.
Surface area: **1.200 m²**



External
insulation
of private home,
Cyprus.
Surface area:
600 m²

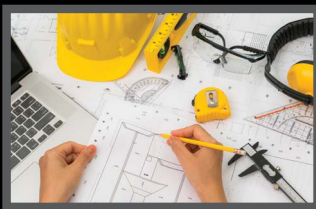


VITEX THERM

Thermal Insulation System

TECHNICAL CONSULTANTS TEAM

The special technical consultants team for the construction sector is consisted of technical experts who have hands-on project experience acquired by the long track record of Vitex in Southeastern Europe.



- Project design & support



- Color shades support



- Special competitive prices



Tel.: +30.210.5589.400

vitextherm@vitex.gr

www.vitextherm.gr
www.vitex.gr/en

